



SAVE 30%

MOLDEX2700N95
Disposable Respirator 10/box
Reg. \$40.20/box **\$ 28.14**

SUP378AFL
Sizes large & medium

Reg. \$11.25 **SAVE 20%**

\$ 8.99



SAM455
Severe cold winter liner
Winter liners give you added protection in cold conditions; can be worn with caps, hats, welding helmets, hardhats or alone. Flame-resistant outer shell. Twill outer layer, sheep thermal lined and full neck flap.

SAVE 20% \$ 8.92 Reg. \$11.15

SE2QC
CSAType 2 Hardhat
With quick lock pegs designed to be worn "backwards."

Reg. \$47.49

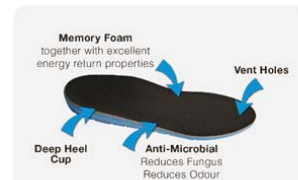
SAVE 15%
\$ 40.36

ARKSE2QC02A000 (Yellow)
ARKSE2QC09A000 (Grey)



SOL5MM **SAVE 25% \$ 15.99**

MEMORY FOAM INSOLES
Reg. \$21.39 **Matting on the Go™**



- Memory form technology together with custom formulated foam with excellent energy return properties
- Relieves pain & fatigue
- Anti-Microbial
- Cooler than traditional memory foam insoles

rough service



EiKO's Advantage™ line of LED A19 lamps feature a 240° beam angle and a shatter-proof plastic cover – not to mention an incredible 25,000 hour life – and are ideal for use in rough service applications such as trouble lights and garages.

EiKO
CERTIFIED GREEN

EIKLED9WA19/240/840K-G4P
60W Natural White A19 Equivalent **SAVE 20%**
Reg. \$11.49 **\$ 9.19**

BOSCH GMS120 WALL SCANNER-
Multi-mode detection — for detection of wood studs, metal objects (rebar, studs and steel/copper pipes) or live wiring

\$ 79.79



BOSCH
Invented for life

GLM15 Compact Laser Measurer
with a 50-ft range
Reg. \$87.21

\$ 64.99

Instant continuous measurement up to 50 feet

Precise laser measure accuracy to within 1/8"

One-button simplicity delivers easy measurement



Measure and capture hold one measurement while taking another

Pocket sized for easy portability

Square by design to measure at any angle

BAFFIN -30°C/-22°F

BAFIREBMP03-BR1

8" STP. Oil & acid resistant rubber outsole, Slip-resistant outsole inserts, frost plate food-bed finish, non-metallic construction, waterproof leather, 8-Tek insulation throughout. CSA/ASTM CE approved non metallic safety toe and plate with approved ESR/BH protection.
Reg. \$180.20



SAVE 15%
\$ 153.17

BAFFIN

BAF8564-033

Lightweight and flexible TR compound, long-wearing, self-cleaning outsole. 1" snow cuff. -40°C/-40°F felt inner boot system. Protective safety toe and plate, CSA/ASTM approved, eSR/EH rated
Reg. \$66.94



SAVE 15%
\$ 56.89

BAFFIN

BAF5157-0000

BAFFIN ICE BEAR

Light weight abrasion resistant Polyurethane (PU) moulded boot. Wide fit through the calf and foot. Thermal PU compound is cold crack resistant to -50°C/-58°F



\$ 194.48

Seaboard Industrial Supply Co., Ltd



15 School Street (King's Road at the Tracks)

Sydney, NS B1S 3G1

Phone: 902-564-0400 Fax: 902-539-1090

sales@seaboardindustrial.ca

Flyer Expires January 31, 2015

While supplies last

TEN312-4904
Heavy-duty Tiger Torch
500,000BTUs, 10-ft hose.
Reg. \$109.40

SAVE 20%

\$ 87.52



SDS Concrete Drills. Limited Quantities!

1/4"x6" OAL #3855073 \$ 3.75
1/2"x6" OAL #3855080 \$ 3.95



HIL259768
Window foam Dispenser
Reg. \$175.63

SPECIAL \$ 74.99



HILTI Extreme weather door & window foam
Reg. \$17.88

SALE \$ 14.28



HIL2100727

Performs even at temperatures as low as -10C, low pressure build, high insulating value saves time & money. cUL classified and LEED certified (Flame & smoke spread ratings are based on ULC S102 testing.

Can be applied from -10 to 35C



PORTER CABLE

PORPCK603L2
20V max Li-Ion
1/2" Drill
Recip saw
One battery
Charger case
Reg. \$169.99



SPECIAL \$ 139.99



DWD28065
5" / 6" High-performance
Grinder with Trigger Grip
13 Amp / 2.3hp
Reg. \$164.64

SALE \$ 129.99

DEWALT

Hi Performance Industrial Tools

DWDC759KA
1/2" 18V Drill



SALE \$ 129.99

TEN337
26" Steel Toolbox

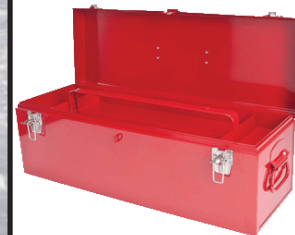
Reg. \$67.10

SAVE 15%

\$ 57.03



HOLDSD-127LRT-F
1/2" x 72" Fibreglass
Driveway
Marker
Reg. \$7.95
SAVE 20%
\$ 6.36



While supplies last



DWDCS391P1

20V Max Cordless Circular Saw

INCLUDES:

6-1/2" Saw Case, Charger, One 5.0 Amp-hour Li-Ion battery.

SALE \$ 219.00

DWDCG412P2

20V Max Cordless Grinder

INCLUDES:

4-1/2" Grinder, Carry Bag, Charger, Two 5.0 Amp-hour batteries

SALE \$ 269.00



Seaboard Industrial Supply Co., Ltd

15 School Street (King's Road at the Tracks)
Sydney, NS B1S 3G1

Phone: **902-564-0400** Fax: **902-539-1090**

sales@seaboardindustrial.ca

Monday-Friday 8am-5pm

Flyer Expires January 31, 2015